

**PSAT/NMSQT**<sup>®</sup>

CollegeBoard / NATIONAL MERIT SCHOLARSHIP CORPORATION

# PSAT/NMSQT<sup>®</sup>

Preliminary SAT/National Merit Scholarship Qualifying Test

# Understanding Scores

**UPDATED WITH SCORE CONVERSIONS**

**2018**



---

# Contact Us

## About the College Board

The College Board is a mission-driven not-for-profit organization that connects students to college success and opportunity. Founded in 1900, the College Board was created to expand access to higher education. Today, the College Board's membership is made up of over 6,000 of the world's leading educational institutions and is dedicated to promoting excellence and equity in education. Each year, the College Board helps more than seven million students prepare for a successful transition to college through programs and services in college readiness and college success—including the SAT® and the Advanced Placement Program®. The organization also serves the education community through research and advocacy on behalf of students, educators, and schools. For further information, visit [collegeboard.org](http://collegeboard.org).

## About the PSAT/NMSQT

The Preliminary SAT/National Merit Scholarship Qualifying Test (PSAT/NMSQT®) is cosponsored by the College Board and National Merit Scholarship Corporation (NMSC). It is administered for the College Board and NMSC by Educational Testing Service (ETS).

## About the National Merit Scholarship Program

The PSAT/NMSQT is the route of entry to the National Merit® Scholarship Program, an academic competition conducted by National Merit Scholarship Corporation (NMSC). Requirements for participation, steps in the competition, and awards offered are explained in the *PSAT/NMSQT Student Guide* and on NMSC's website.

Further information is provided in the *Guide to the National Merit Scholarship Program*. Questions about the scholarship program not answered in the published materials should be directed to NMSC:

**National Merit Scholarship Corporation**  
1560 Sherman Avenue, Suite 200  
Evanston, IL 60201-4897  
847-866-5100  
[www.nationalmerit.org](http://www.nationalmerit.org)

## CONTACTS FOR STUDENTS AND PARENTS

📧 [psathelp@info.collegeboard.org](mailto:psathelp@info.collegeboard.org)

📞 866-433-7728  
+1-212-713-8105 (International)  
8 a.m. to 7 p.m. ET, Mon.–Fri.

## GENERAL CONTACTS

✉ PSAT/NMSQT  
P.O. Box 6720  
Princeton, NJ 08541-6720

## CONTACTS FOR EDUCATORS

📧 [psat/nmsqt@info.collegeboard.org](mailto:psat/nmsqt@info.collegeboard.org)

📞 888-477-PSAT (7728)  
+1-212-237-1335 (International)  
8 a.m.–8 p.m. ET, Mon.–Fri.

---

# The PSAT/NMSQT and the SAT Suite of Assessments

## The SAT Suite of Assessments

The SAT® Suite of Assessments is an integrated system of tests that includes the SAT (for students in grades 11 and 12), the PSAT/NMSQT® and the PSAT™ 10 (for grades 10 and 11), and the PSAT™ 8/9 (for grades 8 and 9).

The tests measure the same skills and knowledge in grade-appropriate ways. They work together to show college readiness over time so educators, students, and parents can monitor student progress. Their content reflects the kind of meaningful, engaging, and challenging work that students find in the best middle school and high school courses taught today.

## What the PSAT/NMSQT Measures

The PSAT/NMSQT measures the skills and knowledge that research shows are the most important for success in college and career. The Reading Test measures comprehension and reasoning skills and focuses on close reading of passages in a wide array of subject areas. The Writing and Language Test measures a range of skills, including command of evidence, expression of ideas, and the use of standard English conventions in grammar and punctuation. The Math Test covers a range of math practices, with an emphasis on problem solving, modeling, using tools strategically, and using algebraic structure.

## How the PSAT/NMSQT Is Scored

Students receive a total score that is the sum of their scores on the two sections (Evidence-Based Reading and Writing and Math).

To calculate section scores, we first compute the student's raw score—the number of questions correctly answered—for each section. Nothing is deducted for incorrect answers or for unanswered questions.

Next, we convert each of the raw section scores to a scaled score of 160 to 760. This conversion process adjusts for slight differences in difficulty among versions of the test and provides a score that is consistent across different versions. The scaled scores are the scores provided on score reports.

## How You Can Use the Student Score Report

The student score report clearly summarizes a student's current achievement levels and encourages next steps to increase college and career readiness. You can help students by going over their score reports and helping them understand what their scores mean. Here's how.

### TALK WITH STUDENTS ABOUT COLLEGE READINESS

For each section, the score report includes an indicator that shows whether the student's score meets the grade-level benchmark. These benchmarks allow students and educators to understand how students are progressing toward college readiness.

- If a student is meeting the benchmark for a section, remind them to continue to take rigorous courses and work hard to stay on track for college success.
- If a student is not meeting the benchmark for a section, connect them to classroom work that is focused on areas that need improvement. Khan Academy® can help supplement this work.

## USE STUDENT SCORES TO IDENTIFY STRENGTHS AND WEAKNESSES

- Use test scores, as well as the cross-test scores and subscores online, to evaluate a student’s relative strengths and weaknesses and to determine which skills need practice.
- Use the red/yellow/green coding on section scores to evaluate how your student is performing relative to other students who are meeting or exceeding the benchmark.
  - ◆ Highlight the areas in green as the student’s strengths.
  - ◆ Prioritize areas in the red range for additional work and practice.

## HELP STUDENTS DECIDE ON NEXT STEPS

- Work with your students to think of ways to develop each of the skills you have identified for focus and improvement.
- Encourage students to go online for more details and to link their College Board account to Khan Academy for a free, personalized study plan.

For further guidance on interpreting score reports, see the Professional Development modules for K–12 educators at [sat.org/educators](https://sat.org/educators).

## Score-Reporting Features

On pages 14–15 of this booklet, you’ll find an annotated sample score report that includes detailed explanations of the information that students receive about their college readiness skills. Students can access their online reports to obtain more information and guidance, including free, personalized Khan Academy instruction and practice based on their results.

**NOTE:** *Score reports for schools testing on Saturday, October 13, or participating in the test administration study or research group won’t include question-level details.*

The online reporting portal at [k12reports.collegeboard.org](https://k12reports.collegeboard.org) offers you an array of powerful tools to assess your students’ progress and plan instruction that delivers what they need. The tools include:

- Flexible reports that can be sorted and filtered by key demographics.
- Instructional planning support using test subscores in specific content areas, benchmarks, information for cross-subject tasks, and data for prescribing interventions when students are behind or ahead.
- Question Analysis Report that helps educators connect subscores to state standards, analyze students’ strengths and weaknesses, learn which mistakes were the most common, and look for opportunities to reinforce skills. (The Question Analysis Report won’t be available to schools participating in the test administration study or research group or to schools testing on Saturday, October 13.)
- Access to the AP Potential™ tool to pinpoint students who are likely to succeed in more challenging courses.

# PSAT/NMSQT

## Scores

### Total Scores

#### ONLINE AND PAPER SCORE REPORTS

The total score is the sum of the two section scores; its range is 320–1520.

### Section Scores

#### ONLINE AND PAPER SCORE REPORTS

Your students receive scores in the range of 160–760 for each of two sections. The Evidence-Based Reading and Writing section score combines the scores for the Reading Test and the Writing and Language Test. The Math section score is derived from the Math Test score, including the calculator and no-calculator portions.

### Test Scores

#### ONLINE AND PAPER SCORE REPORTS

The range for the following test scores is 8–38:

- Reading
- Writing and Language
- Math

### Cross-Test Scores

#### ONLINE SCORE REPORT ONLY

The range for cross-test scores is also 8–38. These scores represent student performance on select questions across the three tests and show a student's strengths in the following domains:

- Analysis in History/Social Studies
- Analysis in Science

### Subscores

#### ONLINE SCORE REPORT ONLY

Subscores in the range of 1–15 offer feedback on student performance in the following skill areas:

- Command of Evidence
- Words in Context
- Expression of Ideas
- Standard English Conventions
- Heart of Algebra
- Problem Solving and Data Analysis
- Passport to Advanced Math

### Score Ranges

#### ONLINE SCORE REPORT ONLY

A student's ability is better represented by score ranges than points. Score ranges are derived from the standard error of measurement and show how much a student's scores would likely vary if they took a different administration of the test under identical conditions.

From recent administrations of the PSAT/NMSQT, these ranges are approximately:

- Total:  $\pm 40$  points
- Section:  $\pm 30$  points
- Test scores, subscores, and cross-test scores:  $\pm 2$  points

### Selection Index

#### ONLINE AND PAPER SCORE REPORTS

Reported on a scale ranging from 48 to 228, the Selection Index score is calculated by doubling the sum of the Reading, Writing and Language, and Math Test scores. See page 10 for more information.

---

# Score Scales and Score Changes

## Using PSAT/NMSQT Scores to Project SAT Scores

The SAT Suite—from the PSAT 8/9 through the SAT—uses a common score scale for the total, section, test, and cross-test scores. The ranges reported for each assessment reflect grade-level appropriateness within the common scale. Thus, while the total range for the SAT is 400–1600, the total range for the PSAT/NMSQT is 320–1520.

This common score scale means that a student who took the PSAT/NMSQT and received a Math section score of 500 would be expected to also get a 500 on the SAT or the PSAT 8/9 if they had taken either of those tests on that same day; a score of 500 represents the same level of academic achievement on all three assessments.

This also means that student growth across the SAT Suite is easy to determine. If a student takes the PSAT/NMSQT this year and receives a 500 Math section score, and then takes the SAT next year and earns a 550 Math section score, that student has shown a growth of 50 points, which likely resulted from hard work both in and out of school.

The total, section, test, and cross-test scores have been vertically scaled to allow the accurate measurement of growth from test to test. Encourage students to focus on the section scores if they are curious about the growth they can expect to see in their scores over the next year. They should look at the set of projected score ranges we have provided (only in online score reports) for students that reflect typical growth. Of course, a student's individual growth will be shaped by the courses taken and by the practice the student undertakes between assessments.

Subscores (available online only) aren't on a vertical scale, and therefore comparing performance year after year should be based on relative performance rather than by calculating student growth across tests.

Students who wish to improve their performance on the SAT should follow these guidelines:

- Develop academic skills through challenging coursework.
- Read extensively and develop strong writing skills.
- Engage in deliberate practice in the three math areas that are emphasized the most in the assessments.
- Take practice tests and upload their results to Khan Academy for free, personalized practice of the skills they need to improve. To learn more, go to [psat.org/practice](https://psat.org/practice).

# Benchmarks and Red/Yellow/Green Performance

## The PSAT/NMSQT Grade-Level Benchmarks

The SAT Suite offers grade-level benchmarks that can be used to gauge whether students are on track for becoming college ready each year in grades 8–12. Grade-level benchmarks represent the section scores on each assessment that students should meet or exceed to be considered on track to be college ready.

The PSAT/NMSQT reports separate benchmarks for 10th and 11th graders to help them understand their level of readiness for college and career training programs. The benchmarks help educators better understand how many students and also which students are on track to have the skills necessary for college-entry, credit-bearing courses. Equipped with this information, educators can support students who need extra help while there is still time for improvement. Teachers can also accelerate the progress of students who meet or exceed the benchmarks.

### RECOMMENDED USES

Grade-level benchmarks can help educators:

- Identify students who are on track for success in college and career readiness.
- Identify students who may need extra support while there is still time for improvement.
- Find students who may be ready for more challenging coursework.

Grade-level benchmarks shouldn't be used to assign academic tracks, to discourage students from pursuing college, or to keep students from participating in challenging courses. Rather, the benchmarks are intended to help **all** students better prepare for life after high school.

## What the Benchmarks Mean

The College and Career Readiness Benchmarks for the current SAT predict a 75% likelihood of achieving a C or higher in related first-semester, credit-bearing college courses. The benchmarks are set at the section level, so there is a benchmark for Evidence-Based Reading and Writing and a benchmark for Math.

Score reports for the PSAT/NMSQT, PSAT 10, and PSAT 8/9 include grade-level benchmarks based on how students grow from year to year toward the SAT benchmarks.

PSAT/NMSQT Grade-Level Benchmarks		
	Evidence-Based Reading and Writing	Math
10th Grade PSAT/NMSQT	430	480
11th Grade PSAT/NMSQT	460	510

## Additional Information Provided to Help You Understand Progress Toward College Readiness

The student score report provides further context for understanding scores by showing a color-coded bar chart for the section scores. Students who met or exceeded the benchmark will be in the green portion of the score band. If students didn't meet the benchmark but were close (within one year's growth), their scores will be in the yellow portion. Students who have a score indicating more than a year's growth below the grade-level benchmark will have a score in the red portion of the score band. Additionally, for each of the test scores and subscores, we have provided a color-coded guide to a student's relative strengths (green) and weaknesses (red).

# Percentiles

A student's percentile rank represents the percentage of students who score equal to or lower than their score. For example, if a student's score is in the 75th percentile, 75% of a comparison group achieved scores at or below that student's score. Two types of percentile ranks, comparing student scores to two different reference populations, are provided in this publication for both total and section scores.

**Nationally representative percentiles** are derived from a research study of U.S. students in the 10th or 11th grade and are weighted to represent all U.S. students in those grades, regardless of whether they typically take the PSAT/NMSQT or the PSAT 10.

**User group percentiles** are based on the actual scores of students who took the PSAT/NMSQT and the PSAT 10 in the past three school years.

## Percentiles for Total Scores

Total Score	10 <sup>TH</sup> GRADE		11 <sup>TH</sup> GRADE	
	PERCENTILES		PERCENTILES	
	Nationally Representative Sample	PSAT/NMSQT and PSAT 10 User	Nationally Representative Sample	PSAT/NMSQT and PSAT 10 User
1520	99+	99+	99+	99+
1510	99+	99+	99+	99+
1500	99+	99+	99+	99+
1490	99+	99+	99+	99+
1480	99+	99+	99+	99
1470	99+	99+	99+	99
1460	99+	99+	99+	99
1450	99+	99+	99+	98
1440	99+	99+	99+	98
1430	99+	99	99+	98
1420	99	99	99	97
1410	99	99	99	97
1400	99	99	99	97
1390	99	99	99	96
1380	99	99	99	96
1370	99	99	99	95
1360	99	98	98	95
1350	98	98	98	94
1340	98	98	98	94
1330	98	98	97	93
1320	98	98	97	93
1310	97	97	97	92
1300	97	97	96	91
1290	97	97	96	91
1280	97	96	95	90
1270	96	96	95	89
1260	96	95	94	88
1250	95	95	94	87
1240	95	94	93	86
1230	94	94	92	85
1220	94	93	92	84
1210	93	93	91	83
1200	92	92	90	82
1190	91	91	89	81
1180	91	90	88	79
1170	90	89	87	78
1160	89	88	86	77
1150	88	87	85	75
1140	87	86	84	74
1130	86	85	83	72
1120	84	84	82	70
1110	83	83	81	69



## Percentiles for Total Scores (continued)

Total Score	10 <sup>TH</sup> GRADE		11 <sup>TH</sup> GRADE	
	PERCENTILES		PERCENTILES	
	Nationally Representative Sample	PSAT/NMSQT and PSAT 10 User	Nationally Representative Sample	PSAT/NMSQT and PSAT 10 User
1100	82	81	79	67
1090	81	80	77	65
1080	79	78	76	63
1070	78	77	74	62
1060	76	76	73	60
1050	75	74	70	58
1040	73	72	68	56
1030	71	71	65	54
1020	69	69	63	52
1010	67	67	61	51
1000	65	66	59	49
990	63	64	57	47
980	62	62	55	45
970	60	60	53	43
960	58	58	51	41
950	56	56	48	40
940	54	54	46	38
930	52	53	44	36
920	50	51	42	34
910	48	49	39	32
900	46	47	37	31
890	44	45	35	29
880	42	43	33	27
870	40	41	31	26
860	38	38	29	24
850	36	36	28	23
840	33	34	26	21
830	31	32	24	20
820	28	30	21	18
810	26	28	20	17
800	24	26	18	15
790	22	24	15	14
780	19	22	14	12
770	17	20	12	11
760	15	18	10	10
750	13	16	8	9
740	11	14	8	8
730	9	12	7	7
720	8	10	5	6
710	6	9	3	5
700	5	7	2	4
690	4	6	2	3

Total Score	10 <sup>TH</sup> GRADE		11 <sup>TH</sup> GRADE	
	PERCENTILES		PERCENTILES	
	Nationally Representative Sample	PSAT/NMSQT and PSAT 10 User	Nationally Representative Sample	PSAT/NMSQT and PSAT 10 User
680	3	5	1	3
670	2	4	1	2
660	2	4	1-	2
650	1	3	1-	2
640	1	2	1-	1
630	1	2	1-	1
620	1	2	1-	1
610	1-	1	1-	1
600	1-	1	1-	1
590	1-	1	1-	1
580	1-	1	1-	1-
570	1-	1	1-	1-
560	1-	1	1-	1-
550	1-	1	1-	1-
540	1-	1-	1-	1-
530	1-	1-	1-	1-
520	1-	1-	1-	1-
510	1-	1-	1-	1-
500	1-	1-	1-	1-
490	1-	1-	1-	1-
480	1-	1-	1-	1-
470	1-	1-	1-	1-
460	1-	1-	1-	1-
450	1-	1-	1-	1-
440	1-	1-	1-	1-
430	1-	1-	1-	1-
420	1-	1-	1-	1-
410	1-	1-	1-	1-
400	1-	1-	1-	1-
390	1-	1-	1-	1-
380	1-	1-	1-	1-
370	1-	1-	1-	1-
360	1-	1-	1-	1-
350	1-	1-	1-	1-
340	1-	1-	1-	1-
330	1-	1-	1-	1-
320	1-	1-	1-	1-
Mean Score	939	934	969	1014
Standard Deviation	170	180	168	197

## Percentiles for Section Scores

10 <sup>TH</sup> GRADE					11 <sup>TH</sup> GRADE				
Evidence-Based Reading and Writing		Math			Evidence-Based Reading and Writing		Math		
Section Score	PERCENTILES		PERCENTILES		PERCENTILES		PERCENTILES		
	Nationally Representative Sample	PSAT/NMSQT and PSAT 10 User	Nationally Representative Sample	PSAT/NMSQT and PSAT 10 User	Nationally Representative Sample	PSAT/NMSQT and PSAT 10 User	Nationally Representative Sample	PSAT/NMSQT and PSAT 10 User	
760	99+	99+	99+	99+	99+	99+	99+	99+	
750	99+	99+	99+	99+	99+	99+	99+	99	
740	99+	99+	99+	99	99+	99	99+	98	
730	99+	99+	99	99	99+	99	99	97	
720	99+	99+	99	99	99+	98	99	96	
710	99	99	99	99	99+	97	98	96	
700	99	99	99	98	99+	96	98	95	
690	99	98	98	98	99	95	97	94	
680	98	98	98	98	99	94	97	93	
670	98	97	97	97	98	93	96	93	
660	97	97	97	97	97	91	95	92	
650	97	96	96	97	96	89	95	91	
640	96	95	96	96	95	88	94	90	
630	95	94	95	95	93	86	93	89	
620	93	92	95	95	91	84	92	87	
610	92	91	94	94	90	81	91	85	
600	90	89	92	92	88	79	90	83	
590	89	87	91	91	86	76	88	81	
580	87	85	89	89	85	73	86	78	
570	85	83	86	87	82	70	83	75	
560	82	80	84	85	80	67	81	72	
550	79	78	82	82	77	63	77	69	
540	76	75	79	80	74	60	73	65	
530	73	72	76	77	71	56	69	62	
520	70	68	72	74	67	53	65	58	
510	66	65	69	71	63	49	62	55	
500	63	62	66	68	60	46	58	52	
490	59	59	62	64	55	43	54	48	
480	56	55	57	60	50	39	49	44	
470	53	52	52	56	46	36	43	40	
460	49	49	49	52	42	33	40	36	
450	46	45	46	48	39	31	37	33	

## Percentiles for Section Scores (continued)

Section Score	10 <sup>TH</sup> GRADE				11 <sup>TH</sup> GRADE			
	Evidence-Based Reading and Writing		Math		Evidence-Based Reading and Writing		Math	
	PERCENTILES		PERCENTILES		PERCENTILES		PERCENTILES	
	Nationally Representative Sample	PSAT/NMSQT and PSAT 10 User	Nationally Representative Sample	PSAT/NMSQT and PSAT 10 User	Nationally Representative Sample	PSAT/NMSQT and PSAT 10 User	Nationally Representative Sample	PSAT/NMSQT and PSAT 10 User
440	43	42	40	43	35	28	31	29
430	39	39	36	39	31	25	26	26
420	36	35	31	35	28	22	23	23
410	32	32	26	30	26	20	20	19
400	28	28	23	26	23	17	18	16
390	24	25	19	21	20	15	14	13
380	21	21	15	17	16	12	11	10
370	17	17	12	14	12	10	9	9
360	13	14	10	11	10	8	6	7
350	10	11	7	8	7	6	3	5
340	7	8	5	6	6	5	2	4
330	5	6	3	5	4	3	1	3
320	3	4	2	4	2	2	1	2
310	2	3	2	3	1	2	1-	2
300	1	2	1	2	1-	1	1-	1
290	1-	1	1	2	1-	1	1-	1
280	1-	1	1-	1	1-	1	1-	1
270	1-	1	1-	1	1-	1-	1-	1
260	1-	1	1-	1	1-	1-	1-	1-
250	1-	1-	1-	1	1-	1-	1-	1-
240	1-	1-	1-	1	1-	1-	1-	1-
230	1-	1-	1-	1-	1-	1-	1-	1-
220	1-	1-	1-	1-	1-	1-	1-	1-
210	1-	1-	1-	1-	1-	1-	1-	1-
200	1-	1-	1-	1-	1-	1-	1-	1-
190	1-	1-	1-	1-	1-	1-	1-	1-
180	1-	1-	1-	1-	1-	1-	1-	1-
170	1-	1-	1-	1-	1-	1-	1-	1-
160	1-	1-	1-	1-	1-	1-	1-	1-
Mean Score	468	470	470	464	480	511	489	503
Standard Deviation	94	99	88	93	92	105	88	103

---

# NMSC Selection Index

The National Merit® Scholarship Program is an annual academic competition among high school students for recognition and college scholarships. The program is conducted by National Merit Scholarship Corporation (NMSC), a not-for-profit organization that operates without government assistance.

## The NMSC Selection Index

Reported on a scale ranging from 48 to 228, the Selection Index score is calculated by doubling the sum of the Reading, Writing and Language, and Math Test scores. For example, a Reading score of 23, a Writing and Language score of 20, and a Math score of 26.5 would result in a Selection Index score of 139 [2(23+20+26.5)].

## How NMSC Uses the Selection Index


NMSC uses the Selection Index score to designate groups of students to receive recognition in the National Merit Scholarship Program. Entry to NMSC's competition for scholarships to be offered in 2020 is determined by students' responses to program entry questions on the 2018 PSAT/NMSQT answer sheet. Both the printed PSAT/NMSQT student score report and the online report show the student's Selection Index, the student's responses to entry items, and whether the student meets participation requirements. Currently, about 1.6 million test takers meet requirements to enter NMSC's competition each year. Almost all entrants are in their third year (grade 11, junior year) of high school.


Of the 1.6 million NMSC program entrants, about 50,000 will earn 2018 PSAT/NMSQT scores high enough to qualify them for recognition. These students will be notified of their standing through their high schools in September 2019. Students who qualify to continue in the competition for scholarships to be offered in 2020 must then meet academic and other requirements specified by NMSC to be considered for awards.

A detailed description of the National Merit Scholarship Program is published in the *Guide to the National Merit Scholarship Program*, mailed to high school principals each fall. For students and parents, information about the competition is given in the *PSAT/NMSQT Student Guide* and at [www.nationalmerit.org](http://www.nationalmerit.org).

For inquiries about any aspect of the National Merit Program—including entry requirements, the selection process, and awards to be offered—contact NMSC directly:

 [www.nationalmerit.org](http://www.nationalmerit.org)

 847-866-5100

 National Merit Scholarship Corporation  
1560 Sherman Avenue, Suite 200  
Evanston, IL 60201-4897

# Answer Key

## Wednesday, Oct. 10, Test Form

Reading Test		Writing and Language Test		Math Test – No Calculator	
<b>SECTION 1</b>		<b>SECTION 2</b>		<b>SECTION 3</b>	
1	A	1	D	1	D
2	D	2	A	2	B
3	B	3	C	3	C
4	B	4	D	4	B
5	D	5	C	5	C
6	B	6	B	6	A
7	A	7	C	7	C
8	D	8	A	8	A
9	C	9	D	9	A
10	D	10	C	10	D
11	D	11	D	11	B
12	A	12	C	12	D
13	C	13	A	13	D
14	C	14	B	14	8, 9
15	A	15	B	15	144
16	D	16	D	16	$\frac{13}{5}, 2.6$
17	B	17	C	17	$\frac{10}{3}, \frac{15}{4}, \frac{25}{6}, 3.33, 3.75, 4.16, 4.17$
18	B	18	D		
19	A	19	C		
20	A	20	A		
21	C	21	A		
22	C	22	C		
23	A	23	D		
24	D	24	A		
25	C	25	C		
26	D	26	D		
27	A	27	C		
28	B	28	B		
29	C	29	D		
30	C	30	A		
31	D	31	A		
32	B	32	B		
33	C	33	D		
34	A	34	D		
35	B	35	B		
36	A	36	A		
37	B	37	C		
38	C	38	D		
39	D	39	B		
40	D	40	B		
41	A	41	A		
42	B	42	B		
43	A	43	C		
44	B	44	C		
45	D				
46	B				
47	C				

Math Test – Calculator	
<b>SECTION 4</b>	
1	C
2	D
3	B
4	A
5	A
6	B
7	D
8	C
9	A
10	C
11	D
12	A
13	C
14	D
15	D
16	A
17	D
18	B
19	D
20	B
21	C
22	D
23	B
24	C
25	C
26	A
27	B
28	3
29	6
30	480
31	285

**NOTE:** For schools participating in the test administration study or research group in fall 2018, correct answers will not be provided. Correct answers will also not be provided for the Saturday, Oct. 13, test form.

## Wednesday, Oct. 24, Test Form

Reading Test		Writing and Language Test		Math Test – No Calculator	
<b>SECTION 1</b>		<b>SECTION 2</b>		<b>SECTION 3</b>	
1	B	1	B	1	A
2	A	2	D	2	A
3	D	3	C	3	B
4	C	4	A	4	B
5	B	5	B	5	C
6	D	6	C	6	B
7	B	7	B	7	C
8	C	8	B	8	D
9	A	9	D	9	B
10	D	10	D	10	D
11	C	11	A	11	A
12	A	12	C	12	D
13	A	13	D	13	C
14	D	14	C	14	5
15	B	15	B	15	$\frac{1}{3}, .333$
16	C	16	C	16	16
17	D	17	D	17	$\frac{5}{2}, 2.5$
18	B	18	A		
19	C	19	D		
20	C	20	A		
21	A	21	B		
22	B	22	A		
23	C	23	B		
24	A	24	A		
25	D	25	D		
26	A	26	D		
27	D	27	C		
28	C	28	C		
29	B	29	A		
30	D	30	B		
31	C	31	D		
32	A	32	B		
33	D	33	C		
34	B	34	D		
35	B	35	C		
36	C	36	A		
37	A	37	C		
38	D	38	C		
39	A	39	C		
40	D	40	D		
41	D	41	D		
42	B	42	A		
43	C	43	D		
44	B	44	B		
45	C				
46	C				
47	A				

Math Test – Calculator	
<b>SECTION 4</b>	
1	A
2	A
3	D
4	A
5	C
6	B
7	C
8	B
9	C
10	C
11	B
12	D
13	A
14	C
15	A
16	C
17	B
18	D
19	C
20	A
21	B
22	D
23	B
24	A
25	C
26	D
27	D
28	24
29	6
30	$\frac{2}{5}, .4$
31	5100

**NOTE:** For more detailed information about scores, visit [psat.org/resources](https://psat.org/resources).

# Score Conversion

Score conversions show how raw scores are converted into test scores, cross-test scores, and subscores.

## IMPORTANT TO NOTE

- The section score for the Evidence-Based Reading and Writing section is calculated by adding the Reading Test score to the Writing and Language Test score and multiplying that figure by 10.
- The section score for the Math section is calculated by multiplying the Math Test score by 20.
- There is no advantage or disadvantage in taking any particular test form.
- On every test, certain scores are not available, and are referred to as “score gaps.” Score gaps emerge as a result of a statistical process called *equating* in which the number of questions answered correctly and the difficulty of the questions are both considered when scoring across the different tests taken nationwide. Although the College Board works to develop tests with the same level of difficulty, the questions in them differ and therefore some can be slightly easier or harder than others. This can influence the placement of the score gaps throughout the scaled score range. With equating, test scores are equivalent and valid, regardless of when students tested or the level of difficulty of the test they took.

**NOTE:** Score conversions will not be available for the Saturday, October 13 test form or for schools participating in the test administration study or research group.

## Wednesday, Oct. 10 Test Form

Raw Score (# of correct answers)	Reading Test Score	Writing and Language Test Score	Math Test Score
48			38
47	38		37.5
46	37		37
45	37		36.5
44	36	38	36
43	36	38	35
42	35	37	34
41	34	36	33
40	34	36	32
39	33	35	31.5
38	32	34	31
37	32	33	30.5
36	31	33	30
35	30	32	29.5
34	30	31	29
33	29	31	28.5
32	29	30	28
31	28	30	27.5
30	27	29	27
29	27	29	26.5
28	26	28	26
27	26	27	25.5
26	25	27	25
25	25	26	24.5
24	25	26	24
23	24	25	24
22	23	24	23.5
21	23	24	23
20	22	23	22.5
19	22	22	22
18	21	21	21.5
17	20	21	21
16	20	20	20.5
15	19	19	20
14	19	18	19.5
13	18	18	19
12	18	17	18.5
11	17	16	18
10	17	16	17
9	16	15	16.5
8	16	14	15.5
7	15	14	14.5
6	14	13	14
5	13	13	13
4	12	12	12
3	11	11	11
2	10	10	10
1	9	9	9
0	8	8	8

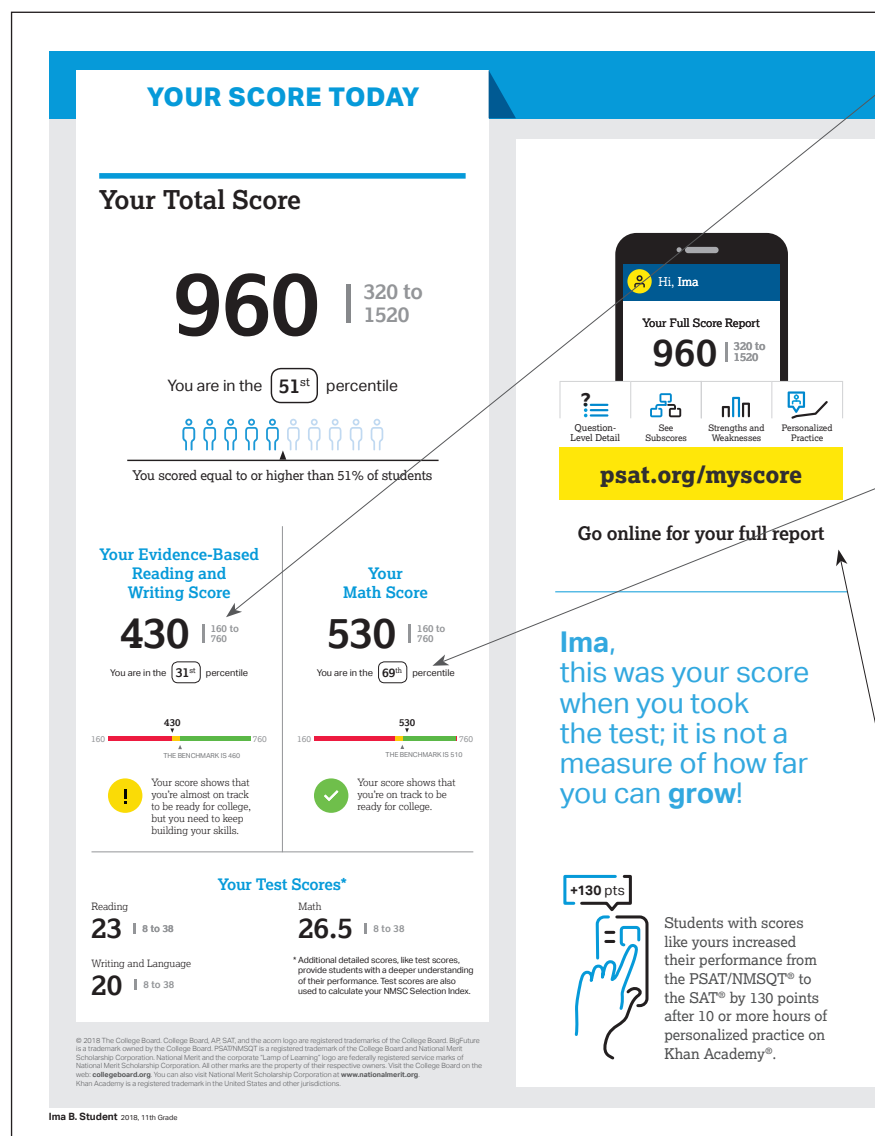
**Wednesday, Oct. 24 Test Form**

<b>Raw Score (# of correct answers)</b>	<b>Reading Test Score</b>	<b>Writing and Language Test Score</b>	<b>Math Test Score</b>
48			38
47	38		35.5
46	36		33.5
45	35		32
44	35	38	31
43	34	36	30.5
42	33	35	29.5
41	32	34	29
40	31	33	28.5
39	30	32	28
38	30	31	27.5
37	29	31	27
36	28	30	26.5
35	28	29	26.5
34	27	29	26
33	26	28	25.5
32	26	28	25
31	25	27	24.5
30	25	26	24
29	25	26	24
28	24	25	23.5
27	24	24	23
26	23	24	22.5
25	22	23	22.5
24	22	22	22
23	21	22	21.5
22	21	21	21.5
21	20	20	21
20	20	20	20.5
19	20	19	20
18	19	19	19.5
17	19	18	19
16	18	18	19
15	18	17	18.5
14	17	17	18
13	17	16	17.5
12	17	16	17
11	16	15	16.5
10	16	15	16
9	15	14	15
8	15	14	14.5
7	14	13	13.5
6	13	13	12.5
5	12	12	12
4	11	11	11
3	10	10	10.5
2	9	10	9.5
1	9	9	8.5
0	8	8	8

# The PSAT/NMSQT Score Report

## A Case Study: Ima B. Student's PSAT/NMSQT Score Report

Take a look at Ima B. Student's sample score report below and on the next page. Use the corresponding information to help you interpret your student's PSAT/NMSQT Score Report.



### What are Ima's scores?

Ima's Evidence-Based Reading and Writing score is 430, and her Math score is 530. In Evidence-Based Reading and Writing, Ima's score is approaching the benchmark, but she is not quite on track for college readiness. In Math, however, Ima is exceeding the benchmark and is on track. Test scores, cross-test scores, and subscores can give Ima a better understanding of areas to work on.

### What are Ima's score percentiles?

Since Ima is in the 11th grade, the percentiles compare her scores with those of all 11th graders in the nation. Ima scored as well as or better in Evidence-Based Reading and Writing than 31% of a nationally representative group of juniors. In Math, she scored as well as or better than 69% of a nationally representative group of juniors. Additional percentiles are available in Ima's online score report.

### How can Ima see her full report?

Ima can visit [psat.org/myscore](https://psat.org/myscore) to see her full score report, learn how to prepare for the SAT, and see her potential for AP® coursework.

Score Report



**YOUR PATH TOMORROW**

**Here's what else is waiting for you online:**

- A link to free personalized practice on Khan Academy**  
Share your scores with Khan Academy to get your personalized practice.
- A list of the challenging courses you're ready for**  
Congrats! Your scores show you're ready to succeed in AP® courses.
- Your customized starter college list**  
Check out the tools at BigFuture™ to kick-start your college plans.

**Don't forget!**  
Register to take the SAT ahead of college application deadlines in spring of junior year and fall of senior year.

**NATIONAL MERIT SCHOLARSHIP CORPORATION**

**Your NMSC Selection Index**  
**139**

NMSC uses a Selection Index score based on PSAT/NMSQT scores as an initial screen of students who enter its scholarship programs. The Selection Index score is double the sum of your Reading, Writing and Language, and Math Test scores.

**Eligibility Information**  
You meet entry requirements for the 2020 National Merit Scholarship Program and your Selection Index score will be considered among 1.6 million program entrants.

**Entry Requirements**  
Information you provided on your answer sheet:  
High school student: **YES**  
Year to complete high school and enroll full time in college: **2020**  
Total years to be spent in grades 9–12: **4**

**National Merit Scholarship Corporation**  
National Merit Scholarship Corporation (NMSC) conducts the National Merit® Scholarship Program, an academic competition for recognition and college scholarships.  
To designate students who qualify for recognition in its 2020 competition, NMSC will consider the 2018 PSAT/NMSQT® Selection Index scores of some 1.6 million test takers (usually high school juniors) who meet program entry requirements. For more information, please visit: [www.nationalmerit.org](http://www.nationalmerit.org)

If any of your responses to NMSC's "Entry Requirements" questions are inaccurate or there has been a change in plans that may affect program entry, write immediately to:  
**National Merit Scholarship Corporation**  
Attn: Scholarship Administration  
1550 Sherman Avenue, Suite 200  
Evanston, IL 60201-4897

Include your name and home address along with your high school name, address, and six-digit code number.

Ima B. Student 2018, 11th Grade

Score Report

### What are Ima's next steps?

When Ima accesses her full score report at [psat.org/myscore](http://psat.org/myscore), she'll also be able to connect to free, personalized practice on Khan Academy, see her potential for AP coursework, and use the college- and career-planning resources at BigFuture™.

### Will Ima be able to enter the National Merit Scholarship Program?

Ima has an NMSC Selection Index score of 139, which is double the sum of her Reading Test (23), Writing and Language Test (20), and Math Test (26.5) scores. This Selection Index score is used by National Merit Scholarship Corporation to designate students to be recognized in its National Merit Scholarship Program.

If an asterisk had appeared next to Ima's score, it would mean she did not meet entry requirements for the program or her score was provided for guidance purposes only and would not be considered in the National Merit Scholarship Program. In this case, Ima meets entry requirements and will be recognized if her score places her among the 50,000 high scorers. For entry requirements and information on the steps in the competition, see the 2018 *PSAT/NMSQT Student Guide* or visit [www.nationalmerit.org](http://www.nationalmerit.org).

### When should Ima take the SAT?

As a junior, Ima should begin planning when she will take the SAT. Most students take the SAT for the first time in their junior year. By planning now, Ima can ensure she has adequate time to practice for the SAT. She can take advantage of practice resources by visiting [psat.org/myscore](http://psat.org/myscore).

### How can Ima learn from her answers?

Using her score report with her PSAT/NMSQT test booklet, Ima can see the actual questions, correct answers, and difficulty level alongside her own answers. She can use her online score report to review the questions she answered incorrectly or omitted, and to see detailed answer explanations.

**NOTE:** For students at schools participating in the test administration study or research group or testing on Saturday, October 13, the actual questions, answers, and answer explanations won't be provided, and the score report won't include the correct answer column.

**Your Question-Level Feedback**

**QUESTIONS OVERVIEW**

<b>READING</b>	47 Total Questions	21 Correct Answers
<b>WRITING AND LANGUAGE</b>	44 Total Questions	17 Correct Answers
<b>MATH - CALCULATOR</b>	31 Total Questions	15 Correct Answers
<b>MATH - NO CALCULATOR</b>	17 Total Questions	10 Correct Answers
<b>WRITING AND LANGUAGE</b>	14 Total Questions	2 Correct Answers
<b>MATH - CALCULATOR</b>	7 Total Questions	0 Correct Answers

**KEY**  
 ✓ Correct  
 ○ Omitted  
 U Unscorable  
 X Multi-Grid/Incorrect  
 ■ Easy Question  
 ■ Medium Question  
 ■ Hard Question  
 ■ Easy Question Missed\*

**READING**

Questions #	Correct	Your Answer	Difficulty
1	A	✓	■
2	B	✓	■
3	B	✓	■
4	B	✓	■
5	C	✓	■
6	D	✓	■
7	B	✓	■
8	A	✓	■
9	D	✓	■
10	A	✓	■
11	D	✓	■
12	D	✓	■
13	A	✓	■
14	A	X	■
15	C	✓	■
16	B	✓	■
17	D	✓	■
18	B	✓	■
19	A	✓	■
20	C	✓	■
21	B	✓	■
22	D	✓	■
23	B	✓	■
24	D	✓	■
25	C	✓	■
26	B	✓	■
27	B	✓	■
28	A	✓	■
29	A	✓	■
30	B	✓	■
31	D	✓	■
32	A	✓	■
33	C	✓	■
34	A	✓	■
35	A	✓	■
36	C	✓	■
37	B	✓	■
38	C	✓	■
39	C	✓	■
40	C	✓	■
41	B	✓	■
42	B	✓	■
43	A	✓	■
44	A	✓	■
45	A	✓	■
46	D	✓	■
47	C	✓	■

**WRITING AND LANGUAGE**

Questions #	Correct	Your Answer	Difficulty
1	D	✓	■
2	B	✓	■
3	C	✓	■
4	C	✓	■
5	B	✓	■
6	B	X	■
7	A	✓	■
8	B	✓	■
9	A	✓	■
10	D	✓	■
11	D	✓	■
12	B	✓	■
13	C	✓	■
14	C	✓	■
15	D	✓	■
16	B	✓	■
17	B	✓	■
18	A	✓	■
19	B	✓	■
20	C	✓	■
21	A	✓	■
22	A	✓	■
23	C	✓	■
24	D	✓	■
25	C	✓	■
26	A	✓	■
27	A	✓	■
28	B	✓	■
29	D	✓	■
30	C	✓	■
31	D	✓	■
32	B	✓	■
33	D	✓	■
34	D	✓	■
35	D	✓	■
36	B	✓	■
37	C	✓	■
38	A	✓	■
39	C	✓	■
40	D	✓	■
41	D	✓	■
42	A	✓	■
43	C	✓	■
44	B	✓	■

**MATH - CALCULATOR**

Questions #	Correct	Your Answer	Difficulty
1	B	✓	■
2	A	✓	■
3	B	✓	■
4	D	✓	■
5	B	✓	■
6	A	✓	■
7	B	✓	■
8	C	✓	■
9	A	✓	■
10	D	✓	■
11	D	✓	■
12	A	✓	■
13	B	✓	■
14	C	✓	■

**MATH - CALCULATOR**

Questions #	Correct	Your Answer	Difficulty
15	C	✓	■
16	B	✓	■
17	D	✓	■
18	B	✓	■
19	C	✓	■
20	B	✓	■
21	B	✓	■
22	D	✓	■
23	C	✓	■
24	D	✓	■
25	D	✓	■
26	C	✓	■
27	D	✓	■

**MATH - NO CALCULATOR**

Questions #	Correct	Your Answer	Difficulty
28	65	60	■
29	0.12	2	■
30	1368	0	■
31	85	75	■

**MATH - NO CALCULATOR**

Questions #	Correct	Your Answer	Difficulty
1	D	✓	■
2	A	✓	■
3	B	✓	■
4	C	✓	■
5	C	✓	■
6	B	✓	■
7	A	✓	■

**MATH - NO CALCULATOR**

Questions #	Correct	Your Answer	Difficulty
8	B	✓	■
9	C	✓	■
10	D	✓	■
11	A	✓	■
12	C	✓	■
13	B	✓	■

**MATH - NO CALCULATOR**

Questions #	Correct	Your Answer	Difficulty
14	2	0	■
15	90	80	■
16	1	2	■
17	0	✓	■

\*Tip: A great way to start improving, check out the easy questions you missed first.

Ima B. Student 2018, 11th Grade

960 | 1234567890

[psat.org/myscore](http://psat.org/myscore)

Go on line for your full report

Question-Level Detail | See Subscores

Strengths and Weaknesses | Personalized Practice

Score Report

## The PSAT/NMSQT Sample Score Report

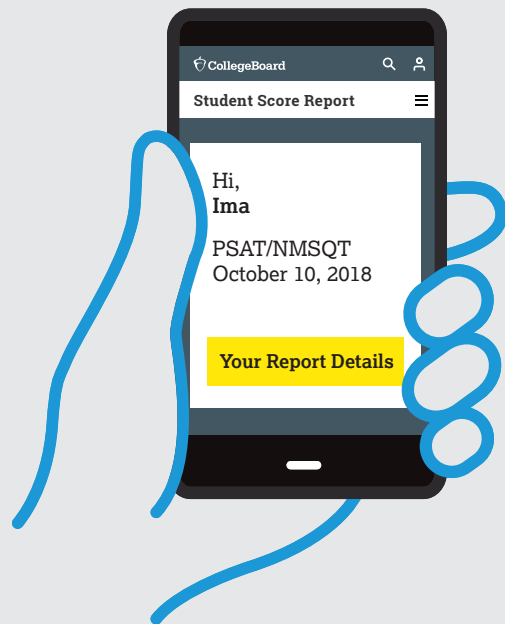
# PSAT/NMSQT®

Preliminary SAT/National Merit Scholarship Qualifying Test

PSAT/NMSQT®

CollegeBoard / NATIONAL MERIT SCHOLARSHIP CORPORATION

# Your Summary Score Report



Get Your Full  
Score Report Online

[psat.org/myscore](https://psat.org/myscore)

Hi, Ima B. Student

School Name: **John F. Kennedy High School**

School Code: **123456**

Grade: **11th Grade**

Student ID: **24068907**

Optional Code: **00**

Access Code: **A02670146P**

College Board ID: **12345678**

# The PSAT/NMSQT Sample Score Report (continued)

## YOUR SCORE TODAY

### Your Total Score

**960** | 320 to 1520

You are in the **51<sup>st</sup>** percentile

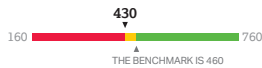


You scored equal to or higher than 51% of students

### Your Evidence-Based Reading and Writing Score

**430** | 160 to 760

You are in the **31<sup>st</sup>** percentile

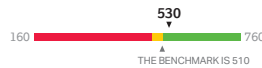


**!** Your score shows that you're almost on track to be ready for college, but you need to keep building your skills.

### Your Math Score

**530** | 160 to 760

You are in the **69<sup>th</sup>** percentile



**✓** Your score shows that you're on track to be ready for college.

### Your Test Scores\*

Reading  
**23** | 8 to 38

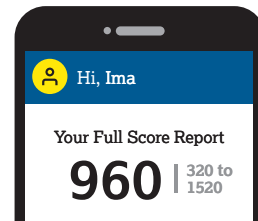
Writing and Language  
**20** | 8 to 38

Math  
**26.5** | 8 to 38

\* Additional detailed scores, like test scores, provide students with a deeper understanding of their performance. Test scores are also used to calculate your NMSC Selection Index.

© 2018 The College Board. College Board, AP, SAT, and the acorn logo are registered trademarks of the College Board. BigFuture is a trademark owned by the College Board. PSAT/NMSQT is a registered trademark of the College Board and National Merit Scholarship Corporation. National Merit and the corporate "Lamp of Learning" logo are federally registered service marks of National Merit Scholarship Corporation. All other marks are the property of their respective owners. Visit the College Board on the web: [collegeboard.org](http://collegeboard.org). You can also visit National Merit Scholarship Corporation at [www.nationalmerit.org](http://www.nationalmerit.org). Khan Academy is a registered trademark in the United States and other jurisdictions.

Ima B. Student 2018, 11th Grade



?

Question-Level Detail    See Subscores    Strengths and Weaknesses    Personalized Practice

**[psat.org/myscore](https://psat.org/myscore)**

Go online for your full report

Ima,  
this was your score when you took the test; it is not a measure of how far you can **grow!**



Students with scores like yours increased their performance from the PSAT/NMSQT® to the SAT® by 130 points after 10 or more hours of personalized practice on Khan Academy®.

# The PSAT/NMSQT Sample Score Report (continued)

## YOUR PATH TOMORROW

### Here's what else is waiting for you online:

1

#### A link to free personalized practice on Khan Academy

Share your scores with Khan Academy to get your personalized practice.

2

#### A list of the challenging courses you're ready for

Congrats! Your scores show you're ready to succeed in AP® courses.

3

#### Your customized starter college list

Check out the tools at BigFuture™ to kick-start your college plans.

SAT

#### Don't forget!

Register to take the SAT ahead of college application deadlines in spring of junior year and fall of senior year.



#### Your NMSC Selection Index

**139**

NMSC uses a Selection Index score based on PSAT/NMSQT scores as an initial screen of students who enter its scholarship programs. The Selection Index score is double the sum of your Reading, Writing and Language, and Math Test scores.

#### Eligibility Information

You meet entry requirements for the 2020 National Merit Scholarship Program and your Selection Index score will be considered among 1.6 million program entrants.

If your Selection Index places you among the 50,000 high scorers who qualify for National Merit Scholarship Program recognition, you will be notified next September when qualifying Selection Index scores will be made available.

#### Entry Requirements

Information you provided on your answer sheet:

High school student: **YES**

Year to complete high school and enroll full time in college: **2020**

Total years to be spent in grades 9–12: **4**

#### National Merit Scholarship Corporation

National Merit Scholarship Corporation (NMSC) conducts the National Merit® Scholarship Program, an academic competition for recognition and college scholarships.

To designate students who qualify for recognition in its 2020 competition, NMSC will consider the 2018 PSAT/NMSQT® Selection Index scores of some 1.6 million test takers (usually high school juniors) who meet program entry requirements. For more information, please visit: [www.nationalmerit.org](http://www.nationalmerit.org).

If any of your responses to NMSC's "Entry Requirements" questions are inaccurate or there has been a change in plans that may affect program entry, write immediately to:

**National Merit Scholarship Corporation**  
**Attn: Scholarship Administration**  
**1560 Sherman Avenue, Suite 200**  
**Evanston, IL 60201-4897**

Include your name and home address along with your high school name, address, and six-digit code number.

# The PSAT/NMSQT Sample Score Report (continued)\*

## Your Question-Level Feedback

### QUESTIONS OVERVIEW

#### READING

**47**  
Total Questions

**21**  
Correct Answers

**25**  
Incorrect Answers

**1**  
Omitted Answers

#### WRITING AND LANGUAGE

**44**  
Total Questions

**17**  
Correct Answers

**26**  
Incorrect Answers

**1**  
Omitted Answers

#### MATH – CALCULATOR

**31**  
Total Questions

**15**  
Correct Answers

**14**  
Incorrect Answers

**2**  
Omitted Answers

#### MATH – NO CALCULATOR

**17**  
Total Questions

**10**  
Correct Answers

**7**  
Incorrect Answers

**0**  
Omitted Answers

**\*Tip:** A great way to start improving: check out the easy questions you missed first.

#### KEY

- ✓ Correct
- Omitted
- U Unscorable
- X Multi-Grid/Incorrect
- Easy Question
- Medium Question
- Hard Question
- Easy Question Missed\*

#### READING

Question #	Correct	Your Answer	Difficulty
1	A	✓	■
2	B	A	■
3	B	✓	■
4	B	A	■
5	C	✓	■
6	D	✓	■
7	B	✓	■
8	A	✓	■
9	D	✓	■
10	A	✓	■
11	D	C	■
12	D	B	■
13	D	A	■
14	A	X	■
15	C	B	■
16	B	C	■
17	D	C	■
18	B	D	■
19	A	✓	■
20	C	✓	■
21	B	D	■
22	D	✓	■
23	B	D	■
24	D	✓	■
25	C	✓	■
26	B	A	■
27	B	C	■
28	A	C	■
29	D	A	■
30	B	A	■
31	D	✓	■
32	A	✓	■
33	C	✓	■
34	A	B	■
35	A	B	■
36	C	○	■
37	B	C	■
38	C	D	■
39	C	✓	■
40	C	✓	■
41	B	✓	■
42	B	✓	■
43	A	B	■
44	A	✓	■
45	A	C	■
46	D	A	■
47	C	B	■

#### WRITING AND LANGUAGE

Question #	Correct	Your Answer	Difficulty
1	D	C	■
2	B	✓	■
3	C	D	■
4	C	A	■
5	B	D	■
6	B	X	■
7	A	D	■
8	B	C	■
9	A	B	■
10	D	✓	■
11	D	✓	■
12	B	✓	■
13	C	✓	■
14	C	B	■
15	D	✓	■
16	B	A	■
17	B	D	■
18	A	✓	■
19	B	✓	■
20	C	D	■
21	A	✓	■
22	A	B	■
23	C	B	■
24	D	C	■
25	C	D	■
26	A	✓	■
27	A	D	■
28	B	✓	■
29	D	A	■
30	C	B	■
31	D	✓	■
32	B	✓	■
33	D	✓	■
34	D	B	■
35	D	✓	■
36	B	A	■
37	C	D	■
38	A	✓	■
39	C	✓	■
40	D	A	■
41	D	B	■
42	A	○	■
43	C	B	■
44	B	C	■

#### MATH – CALCULATOR

Question #	Correct	Your Answer	Difficulty
1	B	✓	■
2	A	✓	■
3	B	✓	■
4	D	✓	■
5	B	C	■
6	A	✓	■
7	B	✓	■
8	C	B	■
9	A	✓	■
10	D	C	■
11	D	✓	■
12	A	✓	■
13	B	✓	■
14	C	✓	■

Question #	Correct	Your Answer	Difficulty
28	65	60	■
29	0, 12	2	■
30	1368	0	■
31	85	75	■

#### MATH – CALCULATOR

Question #	Correct	Your Answer	Difficulty
15	C	A	■
16	B	✓	■
17	D	✓	■
18	B	A	■
19	C	A	■
20	B	✓	■
21	B	C	■
22	D	C	■
23	D	B	■
24	C	○	■
25	B	A	■
26	D	✓	■
27	D	A	■

#### MATH – NO CALCULATOR

Question #	Correct	Your Answer	Difficulty
1	D	✓	■
2	A	✓	■
3	B	✓	■
4	C	B	■
5	C	✓	■
6	B	✓	■
7	A	✓	■

Question #	Correct	Your Answer	Difficulty
8	B	C	■
9	C	✓	■
10	D	✓	■
11	A	C	■
12	C	✓	■
13	B	A	■

Question #	Correct	Your Answer	Difficulty
14	2	0	■
15	90	80	■
16	1	2	■
17	0	✓	■

Hi, Ima

Your Full Score Report

**960** | 320 to 1520

[psat.org/myscore](https://psat.org/myscore)

Go online for your full report

Question-Level Detail

See Subscores

Strengths and Weaknesses

Personalized Practice

\*For schools participating in the test administration study or research group and for Saturday, October 13, administrations, students will see if they answered questions correctly. Actual questions, answers, and answer explanations will not be provided.

© 2018 The College Board. College Board, Advanced Placement Program, AP, SAT, and the acorn logo are registered trademarks of the College Board. AP Potential, BigFuture, and PSAT are trademarks owned by the College Board. PSAT/NMSQT is a registered trademark of the College Board and National Merit Scholarship Corporation. National Merit and the corporate "Lamp of Learning" logo are federally registered service marks of National Merit Scholarship Corporation. All other marks are the property of their respective owners. Visit the College Board on the web: collegeboard.org.  
Khan Academy is a registered trademark in the United States and other jurisdictions.  
01418-062 160042543

